

6th International Conference on Coupled
THMC Processes in Geosystems



GEOPROC 2017

Access Maps

5-7 July 2017
IFSTTAR, Ecole des Ponts ParisTech
Paris, France



Conference Venue

Conference Venue

The Conference will take place in two buildings as shown in the following image.

The *Reception Hall*, the *Amphitheater "Bienvenüe"*, *Room 1* (parallel sessions) and the *Restaurant* are in the Bienvenüe building. The *Poster session* and the *Cocktail* will take place in the Ecole des Ponts building.



Getting to the Conference Venue

- By RER A (Red line):

The Conference Venue is 30 minutes away from the center of Paris by RER A.

Get off the train at the station "Noisy-Champs" and take the exit number 3.

The Conference Venue is be 5 minutes on foot from the train station.

See maps below.

- By bus:

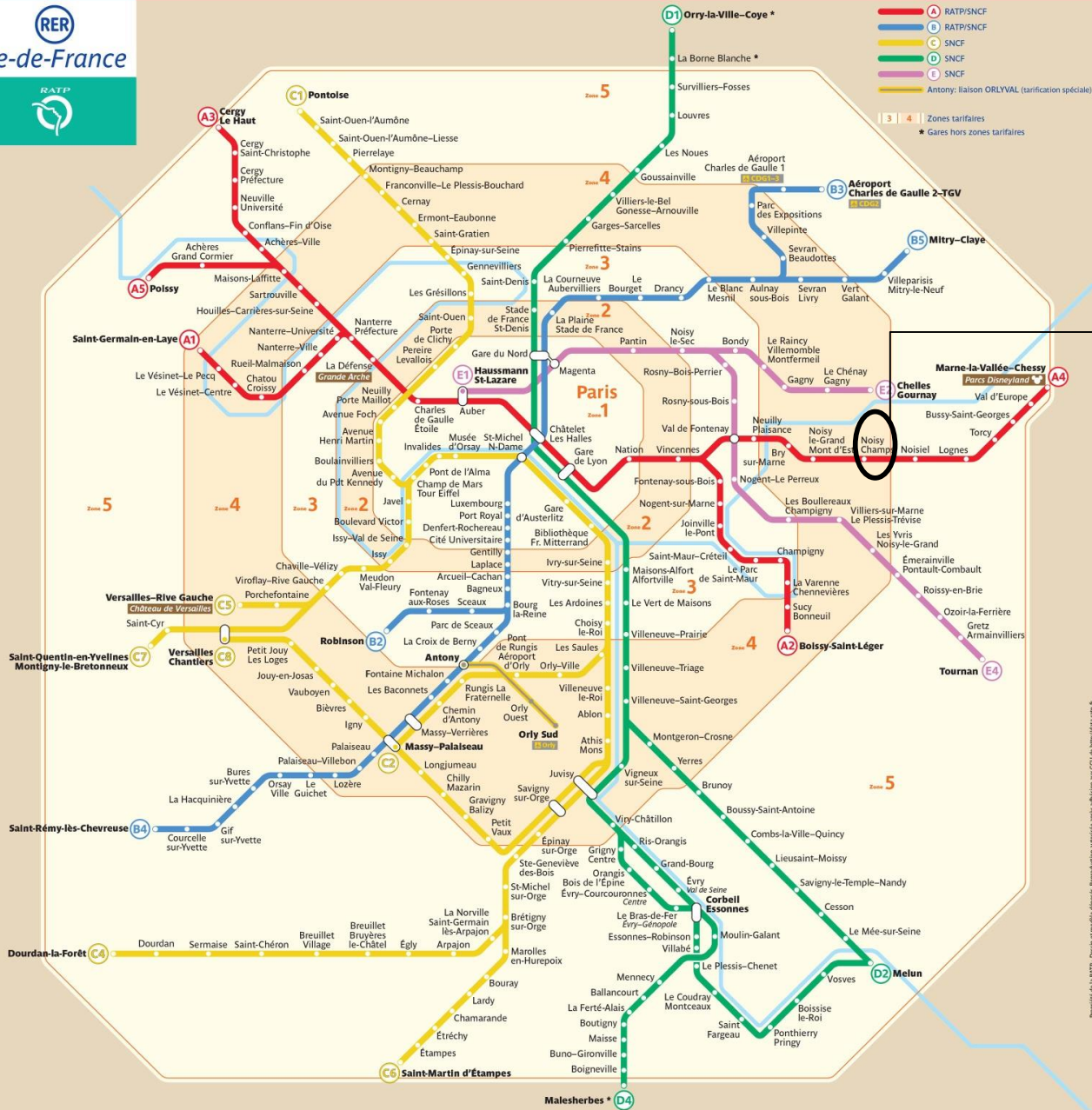
Bus 213 - Bus 212 - Bus 312 - Bus 320 - Bus 310: Get off at station "Noisy champs".

Bus 100: Get off at station "Crous".

- By car:

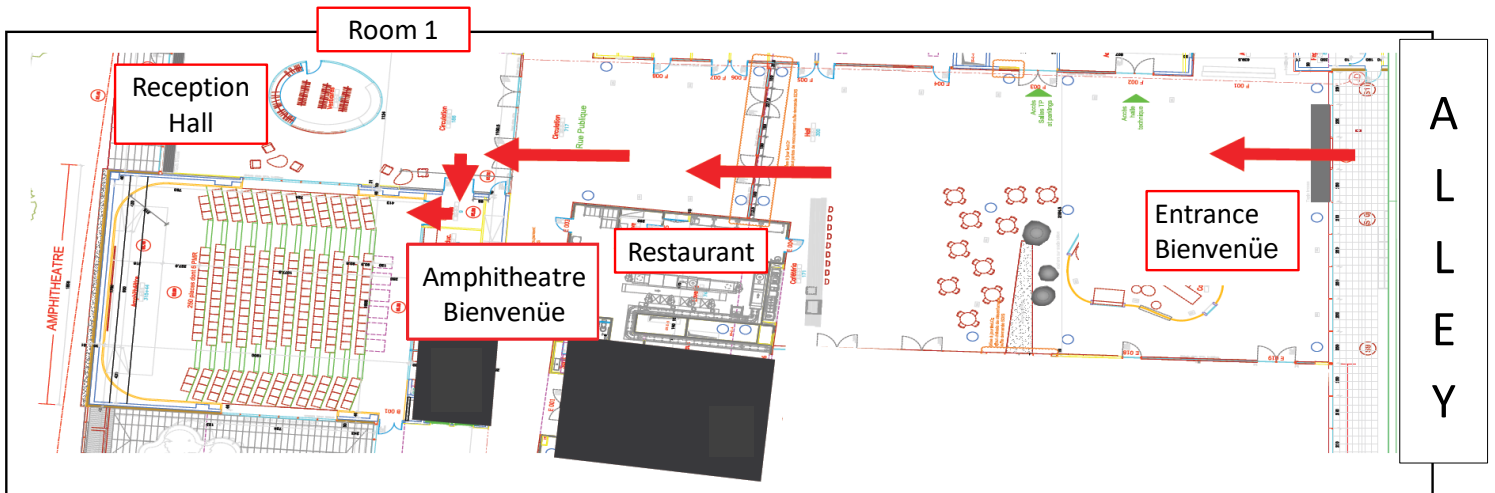
Highway A4, Exit 10.

RER PARIS

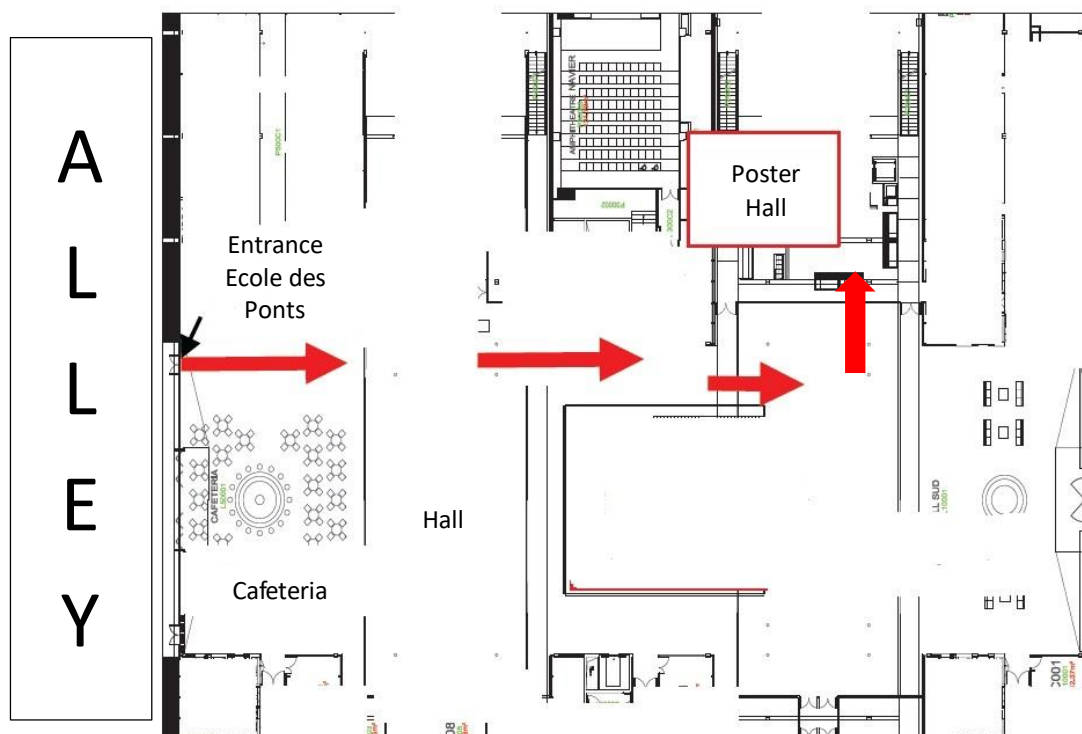


“Noisy
Champs”
Station

Bienvenüe Building:



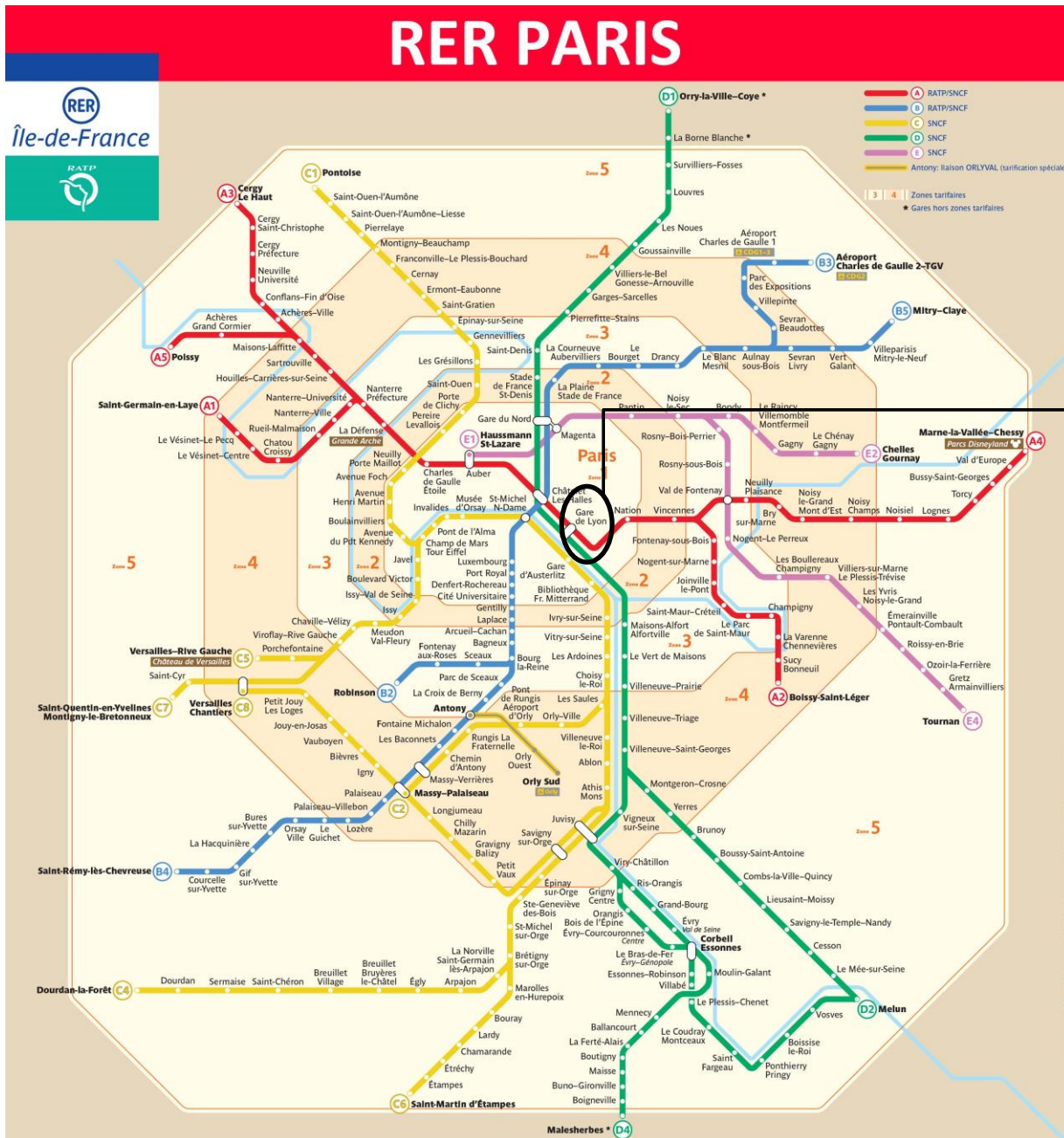
Ecole des Ponts building:



Banquet

Train Bleu Restaurant:

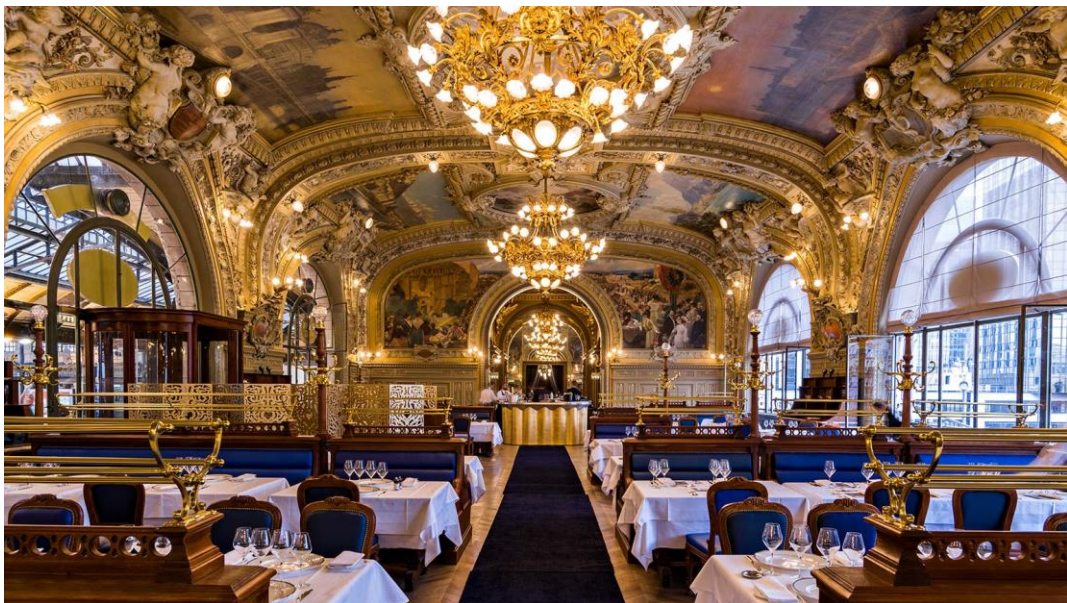
Take RER A (red line) and go to the station "Gare de Lyon". The restaurant is on level 1.



The restaurant from the outside:



The restaurant from the inside:





GEOPROC 2017

Organized by:



École des Ponts
ParisTech



IFSTTAR



Sponsored by:



LABEX MMCD



ISRM



CFMR